

Method

Improved understanding of brain morphology through 3D printing: A brief guide

Christopher R Madan ^{‡,§}

[‡] Boston College, Chestnut Hill, MA, United States of America

[§] University of Alberta, Edmonton, AB, Canada

Corresponding author: Christopher R Madan (madanc@bc.edu)

Reviewable v2

Received: 04 Sep 2016 | Published: 08 Sep 2016

Citation: Madan C (2016) Improved understanding of brain morphology through 3D printing: A brief guide.

Research Ideas and Outcomes 2: e10398. doi: [10.3897/rio.2.e10398](https://doi.org/10.3897/rio.2.e10398)

Abstract

Background

Brain morphology can provide insights into inter-individual differences. In the present guide, we outline the steps for generating a print-ready 3D model of brain structures from a standard T1-weighted structural MRI volume. By improving our understanding of brain morphology, we hope to enhance teaching and scientific communication, as well as aid in the development of novel measures of brain morphology.

New information

The present guide details the steps for generating a print-ready 3D model of brain structures from a standard T1-weighted structural MRI volume.

Keywords

brain morphology; 3d printing; structural MRI

Introduction

Recent research has demonstrated that shape-related properties (i.e., morphology) of the brain can be useful in characterizing inter-individual differences (e.g., Hogstrom et al. 2013, Madan and Kensinger 2016, Maguire et al. 2000, McKay et al. 2014, Strike et al. 2015, Walhovd et al. 2014). Formal analyses of the shape of cortical and subcortical brain structures rely on quantitative measurements. However, qualitative characteristics of brain morphology can be a useful compliment, particularly in teaching and scientific communication settings. Improved qualitative methods may also be useful in laying the foundation for the development of novel quantitative methods. Here we outline a brief guide for the 3D printing of brain morphology, beginning from a standard T1-weighted structural MRI volume.

Implementation

Methodology

The processing pipeline used to produce a print-ready mesh is outlined in Fig. 1 (For a guide for creating 3D visualizations of MRI data, see Madan 2015)

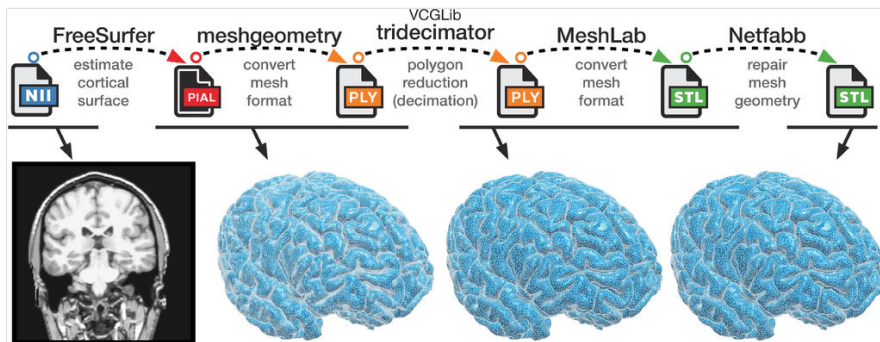


Figure 1.

Illustration of the processing pipeline involved in converting a structural MRI volume to a print-ready surface mesh.

1. Surface reconstruction

FreeSurfer (<http://freesurfer.net/fswiki>) (Dale et al. 1999, Fischl 2012, Fischl et al. 2002) is first used to construct a cortical surface mesh from a standard T1-weighted structural volume (e.g., MPRAGE or SPGR). The standard *recon-all* procedure was used, though this additionally provides many other metrics that are not needed here (e.g., cortical thickness, cortical parcellations). This process takes many hours to complete.

2. Converting mesh and decimation

After the FreeSurfer pipeline has been run, the remaining steps can be executed within a few minutes, provided the necessary programs are already installed. Nearly all of these remaining steps can be executed via a command-line interface, with the commands listed in Table 1. These steps were developed and tested for Mac OS X, but should readily be adapted for use on Linux operating systems.

Table 1.

Code

```

1 mg=/Applications/Research/imaging/meshgeometry/meshgeometry_mac
2 ml=/Applications/meshlab.app/Contents/MacOS/meshlabserver
3 td=/Applications/Research/imaging/vcglib/apps/tridecimator/tridecimator
4
5 f=rh.pial
6 $mg -i $f -centre -o $f.ply
7 $td $f.ply $f.dec.ply 100000
8 $ml -i $f.dec.ply -o $f.dec.stl
9
10 f=lh.pial
11 $mg -i $f -centre -o $f.ply
12 $td $f.ply $f.dec.ply 100000
13 $ml -i $f.dec.ply -o $f.dec.stl

```

First, the cortical surface files (*lh.pial* and *rh.pial*) are converted to a generic mesh format (.ply) using **meshgeometry** (<https://github.com/r03ert0/meshgeometry>). As an example, resulting ply files are provided as supplemental here (Suppl. material 1), based on the 'bert' subject from FreeSurfer (<https://surfer.nmr.mgh.harvard.edu/fswiki/TestingFreeSurfer>). Second, **tridecimator** – a program distributed as part of VCGLib (<http://vcg.isti.cnr.it/vcglib/install.html>; see ¹ for details on compiling tridecimator) – is used to decrease the complexity of the mesh, i.e., polygon reduction via decimation. Prior to this step, the mesh for each hemisphere will be made of 250,000-300,000 polygons; this decimation step will reduce the number of polygons to 100,000 (but the code can be modified to another number). This reduction in polygons is necessary to make the model easier to print, with minimal effect on the shape of the mesh. Third, **MeshLab** (<http://meshlab.sourceforge.net>) is used to convert the mesh again (.ply to .stl).

3. Repairing the mesh

For 3D printing, meshes usually need to be 'repaired' to ensure that there are no holes or other issues with the mesh structure (cf. <https://library.ualberta.ca/services/3dprinting/preparing-3d-model>). This repair process can be readily accomplished using the online version of **Netfabb** (<https://netfabb.azurewebsites.net>), though a local version can instead be installed (<https://www.netfabb.com/products/netfabb-basic>).

(Also see http://www.shapeways.com/tutorials/how_to_use_meshlab_and_netfabb.)

4. 3D printing

The resulting files (.stl) are now print-ready. Fig. 2 shows an example of the resulting printed models. The hemisphere surfaces were split by the printers (University of Alberta Libraries) using Netfabb. Each 'quarter' of a brain is approximately the size of a golf ball and took 4 hours to print; each piece weighs approximately 30 grams, printed using a plastic filament (PLA/PHA blend) from ColorFabb (<http://colorfabb.com/pla-pha>).

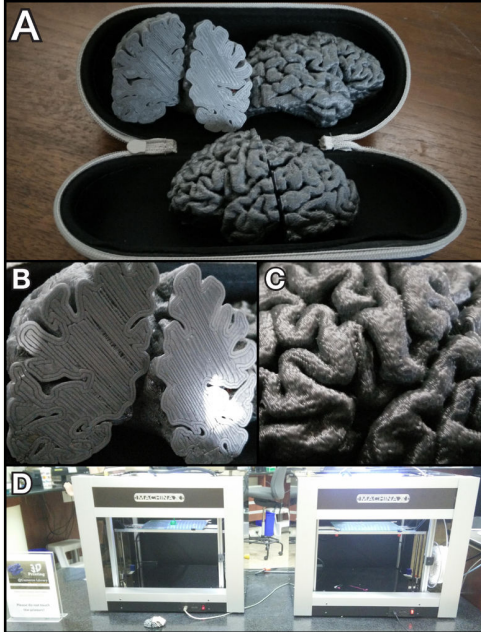


Figure 2.

Photos of a resulting 3D-printed surface. (A) View of the full models. (B) Close-up of the coronal cross-section. (C) Close-up of the lateral surface. (D) Photo of the Machina Mk2 X20 printers used to print the models, located at the University of Alberta Libraries.

Acknowledgements

The code for converting and decimating the meshes was modified from Roberto Toro's *qcsurf* project (<https://github.com/r03ert0/qcsurf>; also see <https://github.com/cMadan/brain3d>). Information for repairing meshes to make them print-ready was inspired by a tutorial from the University of Alberta Library website (<https://library.ualberta.ca/services/3dprinting/preparing-3d-model>). The 3D models were printed by the University of Alberta Libraries.

Funding program

CRM is supported by a fellowship from the Canadian Institutes of Health Research (FRN-146793).

References

- Dale AM, Fischl B, Sereno MI (1999) Cortical surface-based analysis. I. Segmentation and surface reconstruction. *NeuroImage* 9: 179-194. DOI: [10.1006/nimg.1998.0395](https://doi.org/10.1006/nimg.1998.0395)
- Fischl B (2012) FreeSurfer. *NeuroImage* 62: 774-781. DOI: [10.1016/j.neuroimage.2012.01.021](https://doi.org/10.1016/j.neuroimage.2012.01.021)
- Fischl B, Salat DH, Busa E, Albert M, Dieterich M, Haselgrove C, van der Kouwe A, Killiany R, Kennedy D, Klaveness S, Montillo A, Makris N, Rosen B, Dale AM (2002) Whole brain segmentation: Automated labeling of neuroanatomical structures in the human brain. *Neuron* 33: 341-355. DOI: [10.1016/S0896-6273\(02\)00569-X](https://doi.org/10.1016/S0896-6273(02)00569-X)
- Hogstrom LJ, Westlye LT, Walhovd KB, Fjell AM (2013) The structure of the cerebral cortex across adult life: age-related patterns of surface area, thickness, and gyrification. *Cerebral Cortex* 23: 2521-2530. DOI: [10.1093/cercor/bhs231](https://doi.org/10.1093/cercor/bhs231)
- Madan CR (2015) Creating 3D visualizations of MRI data: A brief guide. *F1000Research* 4: 466. DOI: [10.12688/f1000research.6838.1](https://doi.org/10.12688/f1000research.6838.1)
- Madan CR, Kensinger EA (2016) Cortical complexity as a measure of age-related brain atrophy. *NeuroImage* 134: 617-629. DOI: [10.1016/j.neuroimage.2016.04.029](https://doi.org/10.1016/j.neuroimage.2016.04.029)
- Maguire EA, Gadian DG, Johnsrude IS, Good CD, Ashburner J, Frackowiak RS, Frith CD (2000) Navigation-related structural change in the hippocampi of taxi drivers. *Proceedings of the National Academy of Sciences of the United States of America* 97: 4398-4403. DOI: [10.1073/pnas.070039597](https://doi.org/10.1073/pnas.070039597)
- McKay DR, Knowles EEM, Winkler AAM, Sprooten E, Kochunov P, Olvera RL, Curran JE, Kent JW, Carless MA, Göring HHH, Dyer TD, Duggirala R, Almasy L, Fox PT, Blangero J, Glahn DC (2014) Influence of age, sex and genetic factors on the human brain. *Brain Imaging and Behavior* 8: 143-152. DOI: [10.1007/s11682-013-9277-5](https://doi.org/10.1007/s11682-013-9277-5)
- Strike LT, Couvy-Duchesne B, Hansell NK, Cuellar-Partida G, Medland SE, Wright MJ (2015) Genetics and brain morphology. *Neuropsychology Review* 25: 63-96. DOI: [10.1007/s11065-015-9281-1](https://doi.org/10.1007/s11065-015-9281-1)
- Walhovd KB, Tamnes CK, Fjell AM (2014) Brain structural maturation and the foundations of cognitive behavioral development. *Current Opinion in Neurology* 27: 176-184. DOI: [10.1097/WCO.0000000000000074](https://doi.org/10.1097/WCO.0000000000000074)

Supplementary material

Suppl. material 1: Surface meshes (.ply) from FreeSurfer subject 'bert'.

Authors: Christopher R Madan

Data type: surface mesh

Filename: bert_ply.zip - [Download file](#) (6.28 MB)

Endnotes

*1 **Compiling tridecimator**

To compile tridecimator, you need to run two commands (from inside the vcglib/apps/tridecimator directory):

[1] qmake tridecimator.pro

This should generate a few files, including 'Makefile'.

[2] make

You should now have 'tridecimator' (no file extension) – this is the actual executable program. (I get 1 warning when I compile, but this is fine.)

If you don't have qmake installed, see <https://github.com/thoughtbot/capybara-webkit/wiki/Installing-Qt-and-compiling-capybara-webkit>.